



**Rockwell
Automation**

Innovation & Technology Forum

What's New and What's Next in Visualization: **T52**

Tomáš Knobloch

Solution Architect Visualization & SW

Agenda

1

PanelView 5000

2

View Designer

3

ThinManager

4

VersaView 5000

Thin clients

Industrial PC

Monitors

5

PanelView Plus 7

6

FactoryTalk View

PanelView 5000 Graphic Terminals

PanelView 5310 and 5510 Terminals

PanelView 5310 Graphic Terminal

Modern Design



For mid-size and smaller applications

- Same core features as PanelView™ 5510 terminal, common platform architecture
- 6", 7"W, 9"W, 10", 12"W
- 1.46 GHz Processor, 1 Gb RAM, 4 Gb Flash
- Runs v4 and newer Studio 5000 View Designer® software
- Touch screen only with aluminum bezel
- Single port Ethernet
- DC power

PanelView 5510 Graphic Terminal

Modern Design

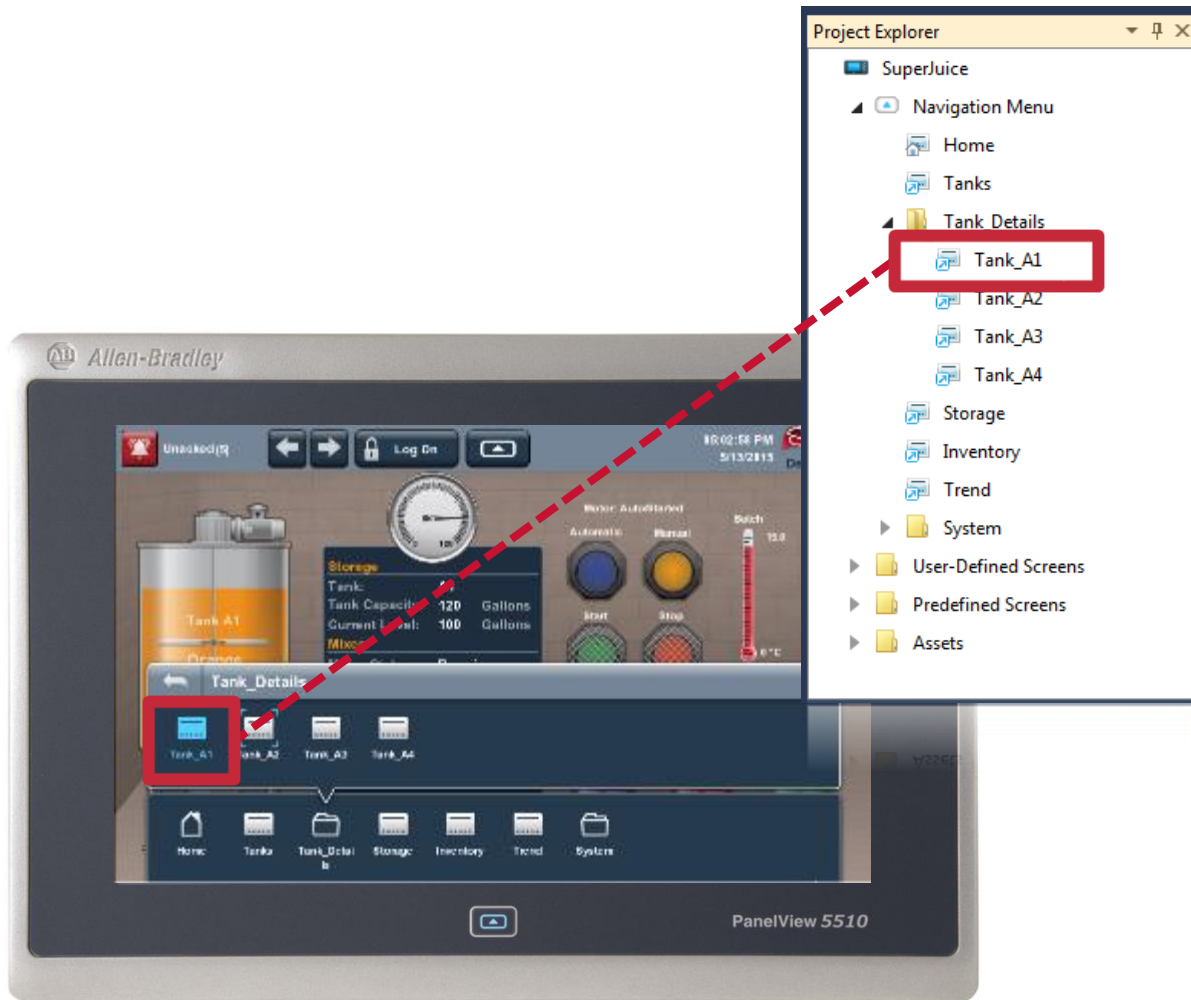


Replaces PanelView™ 5500 terminal

- New hardware platform
- Designed for higher performance applications
- 6.5", 7", 7"W, 9"W, 10.4", 12"W, 15", 19"
 - Resistive touch screen with navigation button and keypad options
- 1.46 GHz dual-core processor, 1 Gb RAM, 4 Gb Flash
- Runs v4 and newer Studio 5000 View Designer® software
- Device Level Ring Ethernet
- DC power only

Easy Navigation

PanelView 5510 Navigation Button



Overview

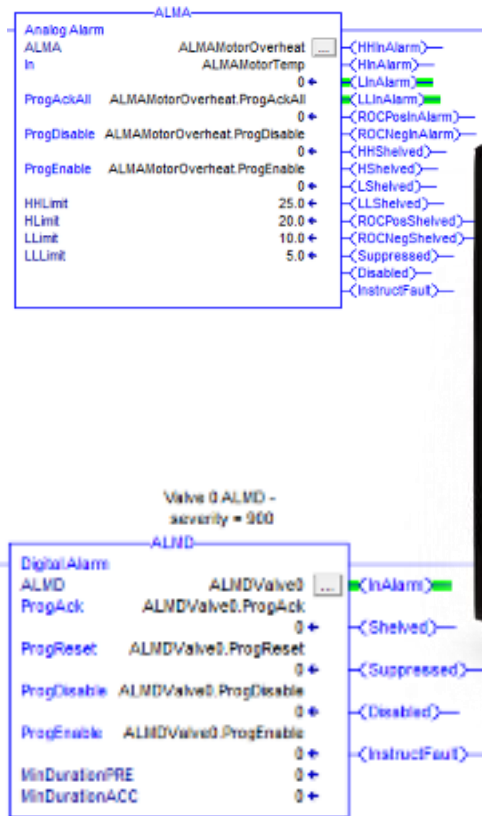
- Navigation menu is built-in part of a PanelView 5000 application
- Easily build navigation menu in View Designer by adding screen shortcuts
- Same navigation menu for physical Navigation Button and System Banner soft navigation button

Benefits

- Save development time with no need to configure navigation buttons and menus
- Easily add screens to an application without editing navigation menus
- Build hierarchy into navigation menu with folders
- More space on screens for application content
- Intuitive user navigation to application screens

Enhanced Integration

Logix-Based Alarms



- Alarms report in time stamped order even if communications are interrupted and reconnected
 - Save thousands in lost productivity by reducing troubleshooting time

PanelView 5000 Family Comparison

Specifications	PanelView™ 5310	PanelView™ 5510
Display Sizes	6", 7 W", 9 W", 10"*, 12 W"	7", 7"W, 9 W", 10", 12 W", 15", 19"
Operator Input	Touch only	Touch (all), Navigation Button (all), Keypad (optional)
I/O	1 USB Host, one USB Device (programming), SD Card	2 USB Host, one USB Device (programming), SD Card
Enclosure Rating	IP65/NEMA 12/13/4x	IP66/NEMA 12/13/4x
Operating Environment	0...50°C	0...55°C Under 19" 0...50°C 19"
Shock/Vibration	15G Operating Shock, 1G Operating Vibration	15G Operating Shock, 2G Operating Vibration
Certifications	c-UL-us, CE, KC, RCM, EAC	c-UL-us, CE, UL Class 1/Div 2 ABCD, KC, RCM, EAC Marine
Power Options	DC (Non-Isolated)	Isolated DC Only
Communications	10/100 Ethernet (Single Port)	10/100 Ethernet DLR (dual-port)

PanelView 5000 Family Comparison

Specifications	PanelView™ 5310	PanelView™ 5510
Multi-Version Support (Ability to install and run multiple versions of configuration software side by side)	Yes	Yes
Application Limits with v5	1 controller, 100 screens, 1000 alarms	4 controllers, 100 screens, 1000 alarms per controller
Resize Application on Download	Yes	Yes
ControlLogix® Controller Compatibility	ControlLogix® 5570 (v27+) / 5580 (v29+)	
CompactLogix™ Controller Compatibility	CompactLogix™ 5370 (v27+) / 5380 (v29+) / 5480 (v31+)	

* Note: Specifications are shown with v5 release of View Studio Designer

Studio 5000 View Designer Software

New Features V5.01

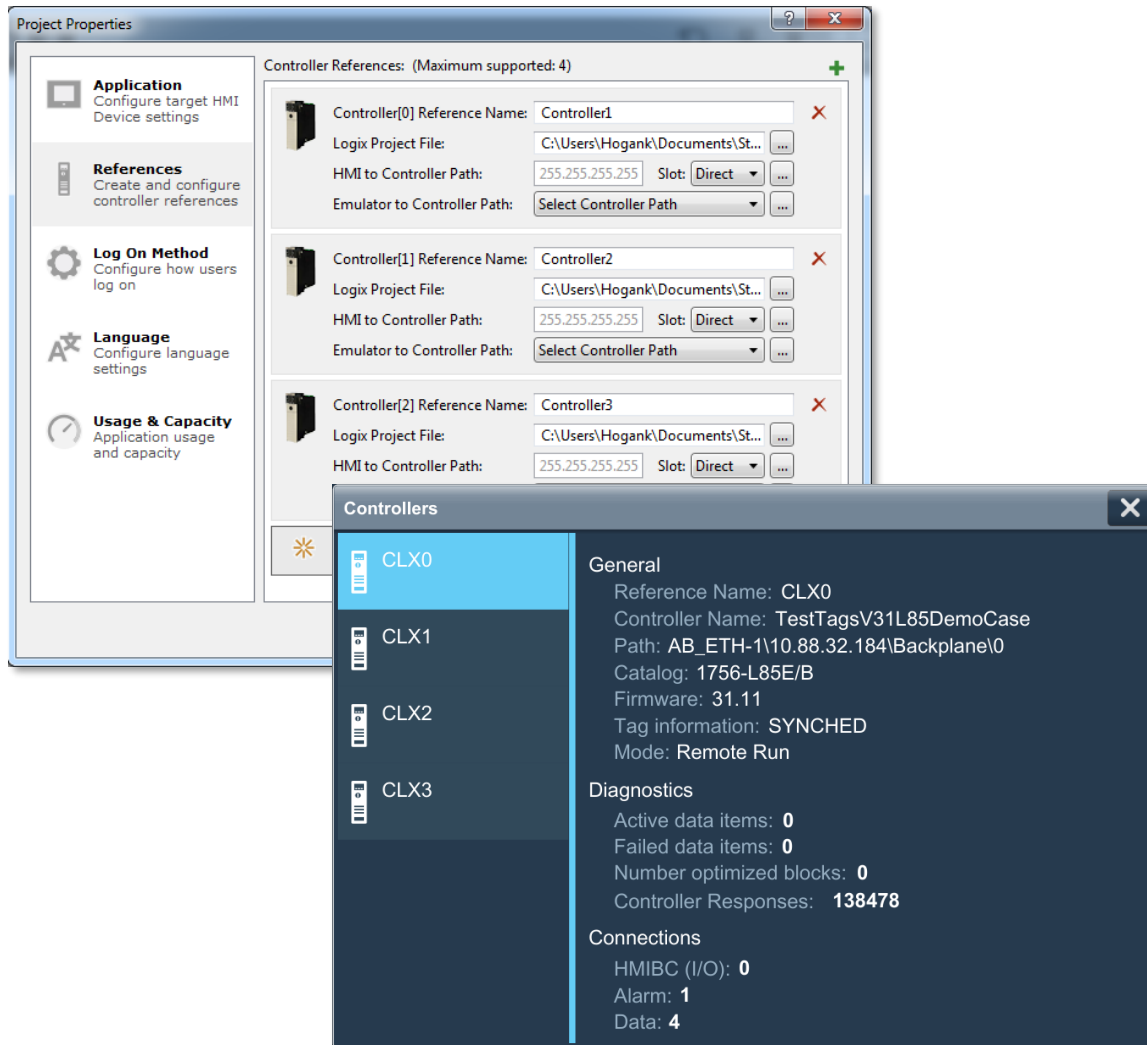
Studio 5000 View Designer v4 and v5 Software

Features

New Studio 5000 View Designer® v4 & v5 Software Features	PanelView™ 5310	PanelView™ 5510
Terminal Emulator	Yes	Yes
Remote Access / Connectivity	VNC	VNC
Trending	Real-time and historical	Real-time and historical
Data logging	Local Only	Local Only
Faceplates - Device	Yes	Yes
Load from Removable Media	Yes	Yes
Document and Content Viewers*	PDF	PDF
Support for up to 4 Controllers*	No	Yes
Logix Tag-based Alarms*	Yes	Yes
Auto logoff*	Yes	Yes

Four Controller Support - PanelView 5510 Terminal

Studio 5000 View Designer Software v5.01















- Support for up to four controllers in a single View Designer project
 - PanelView™ 5510 terminals can now support larger, more complex projects
 - PanelView™ 5310 terminals support a single controller, intended for smaller projects
- Controllers can be of any supported type in any mix (ControlLogix® and CompactLogix® controllers)
- Project Properties allows the creation of up to four controller reference cards
- Online controller status screen shows the status of all four controllers
- System Banner controller status icon alerts operator if any controller has a problem

Logix Tag-based Alarms Support

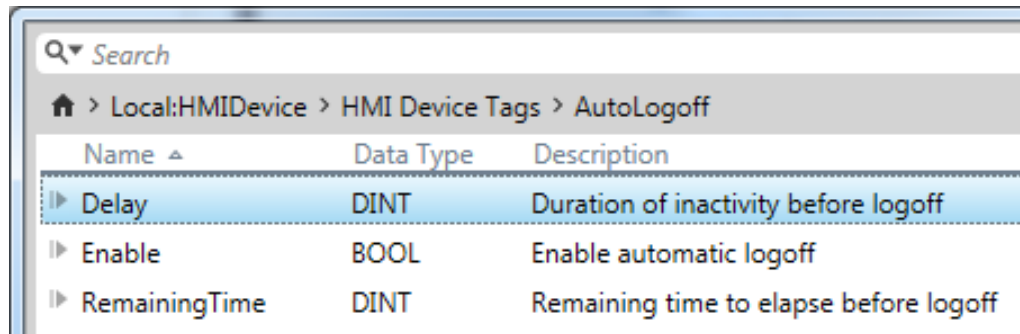
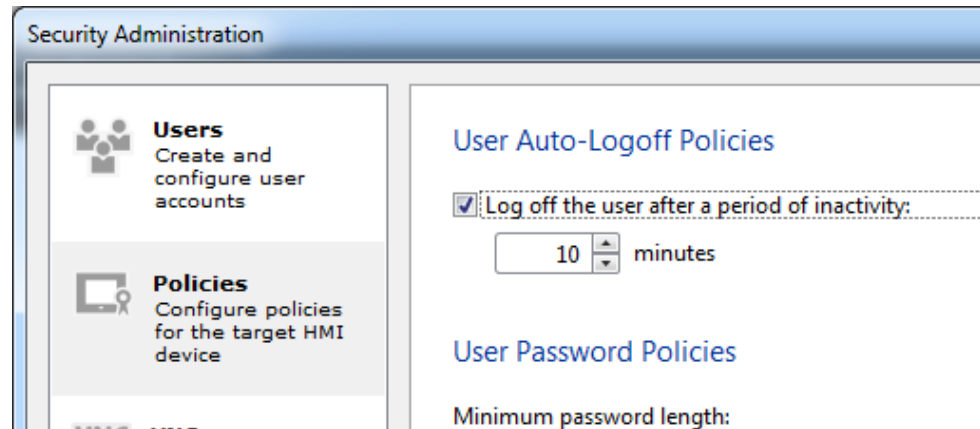
Studio 5000 View Designer Software v5.01

- Support for tag-based alarm feature first introduced in Logix V31
 - Logix tag-based alarms can be embedded in AOIs, take up less memory, and have less scan time impact to the Logix controller
- Any mix of up to 1000 tag-based and instruction based alarms from each controller are supported
- Both instruction-based (ALMA/ALMD) and tag-based alarms appear in the alarm summary and alarm manager and are included in the alarm count rollups

 In Alarm, Unacked (4)				 In Alarm, Acked (0)		 Normal, Unacked (0)		 Faulted (0)	
I	Alarm	Inhibit	Event Time	Condition	Alarm Name	Message			
			... 06:05:46 PM	TRIP	::L85.BOOLarray.@Alarm s.ConveyorSta3Jam	Jam on conveyor station 3			
			... 06:05:33 PM	TRIP	::L85.BOOLarray.@Alarm s.M101 Trip	Motor 101 Trip condition			
			... 05:49:58 PM	TRIP	::L85.Mixer2LevelH	Mixer2 level high			
			... 05:49:58 PM	TRIP	::L85.Mixer1LevelH	Mixer1 level high			

Auto Logoff

Studio 5000 View Designer Software v5.01



Name	Data Type	Description
Delay	DINT	Duration of inactivity before logoff
Enable	BOOL	Enable automatic logoff
RemainingTime	DINT	Remaining time to elapse before logoff

- Enable auto logoff and configure an inactivity logoff period to automatically secure a terminal that is no longer in use
- If no operator action is taken on the terminal for the selected period of inactivity, the current operator is logged off
 - Control is returned to the guest user, and terminal behavior is dictated by the role of the guest user - just as with any operator-initiated log off
 - E.g.: if the guest user role is “None”, the terminal will return to the home screen with read-only access
- System tags can be used to monitor auto logoff status on the terminal

ThinManager

Thin Client Software

ThinManager Securely Delivers Content



Content Types

- Windows Based
 - HMI
 - MES
 - CMMS
 - ERP
 - Web Content
 - IP/USB Cameras
 - Terminal Shadow
- VNC
 - PanelView Plus
 - PanelView 5000

ASSIGN AND DELIVER CONTENT IN THREE WAYS

By Device

By User

By Location

The Connected Enterprise securely manages application delivery to devices, users and locations.



Devices

- Thin/Zero Clients
- Mobile Devices
- PCs



Users

- Individuals
- User Groups

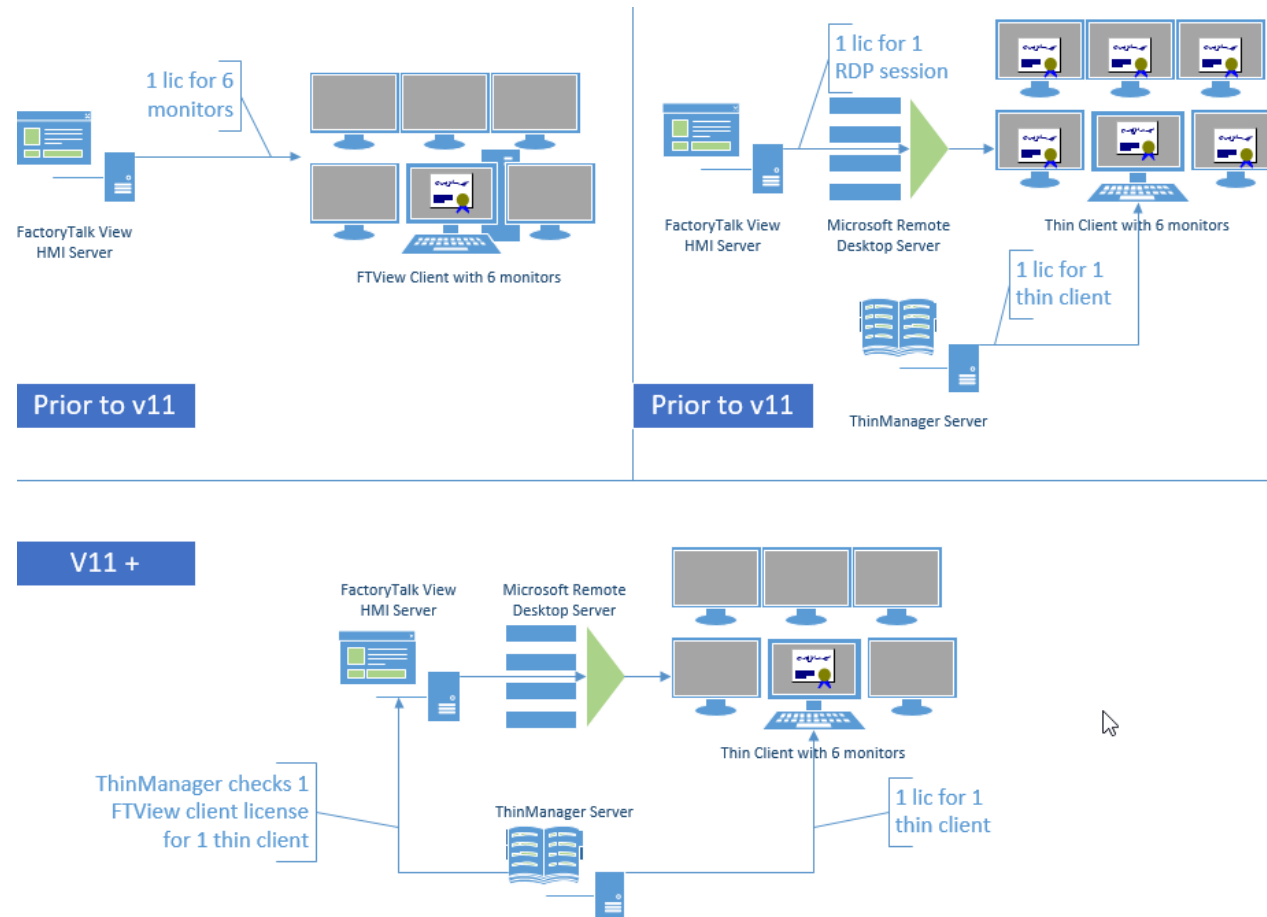


Locations

- Facility
- Lines/Areas
- Assets/Devices

ThinManager / FactoryTalk View SE License Integration

FactoryTalk View SE v11.0 & ThinManager v11



Overview

- ThinManager® thin clients are licensed just like a traditional FT View SE client
- Each ThinManager client consumes a single FT View SE client license no matter how many monitors are connected
- ThinManager standard failover is supported without requiring additional licenses
- ThinManager instant failover requires 2 FT View SE client licenses
- Requires FactoryTalk Activation migration for ThinManager
- Supported with v11 of ThinManager & FT View SE

Benefits

- Each ThinManager client will launch FT View SE clients without additional licenses
- Consistent deployment whether traditional FT View SE Client or ThinManager Thin Client deployment

VersaView 5000

PCs, Thin Clients and Monitors

VersaView Portfolio Offering



VersaView® 5100 Monitors

VersaView® 5200 Thin Clients

Integrated display panel thin clients and non-display thin clients

VersaView® 5400 PCs

Integrated display panel PCs and non-display PCs

**Innovative open architecture
and modern design!**

VersaView 5100 Monitors

Same modern edge-to-edge glass use on VersaView® 5200 and VersaView® 5400 Panel Thin Clients and PCs

Ideal for use with VersaView 5200 Non-Display Thin Clients or other PCs

Two-piece solution separates monitor and thin client so monitor or thin client can be replaced independently

Use with a VersaView 5200 Panel Thin Client to create a dual display for your ThinManager® application to take advantage of Multi-Session or Virtual Screens

Projected capacitance touch screen

Available in four sizes: 12", 15.6", 18.5" and 21.5"

VersaView® 5100 Monitor

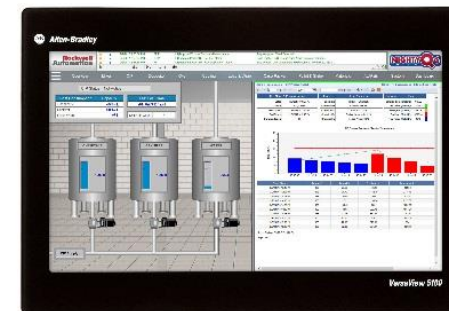


Displayport
USB

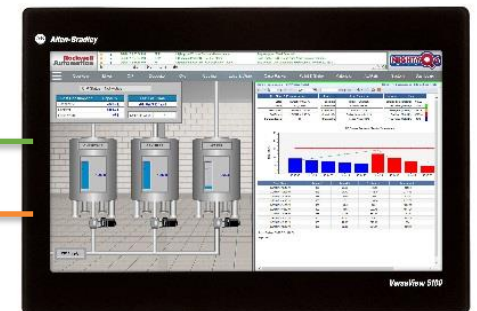


VersaView® 5200
Dual Display Thin Client

VersaView 5200 Panel Thin Client



VersaView 5100 Monitor



DisplayPort
USB

VersaView 5400 Industrial Computers

Intel Atom Bay Trail Quad Core (E3845), 4 GB RAM, 128 GB SSD

Windows 7/WES 7/Windows 10 IoT Enterprise 32-bit & 64-bit operating systems

Fan-less with no moving parts, no battery design for increased reliability

Integrated Display Computer

- Single external display support (DisplayPort)
- Edge-to-edge glass widescreen multi-touch capacitive display
- 12", 15", 19" and 22" with full HD option



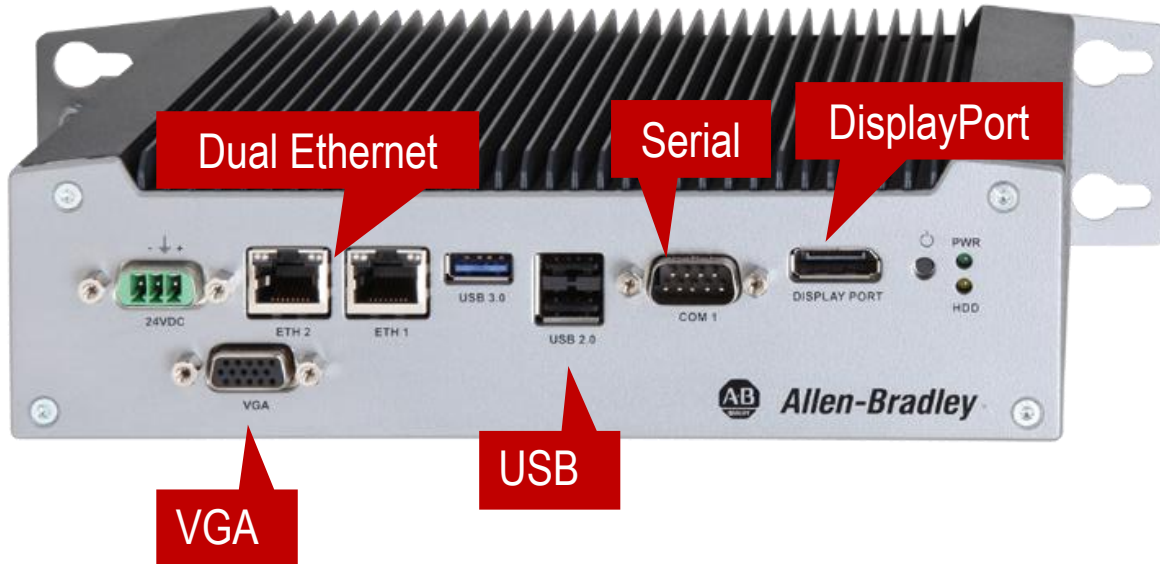
Non-Display Computer

- Dual external display supports (DisplayPort)
- Small form factor
- Multiple mounting options

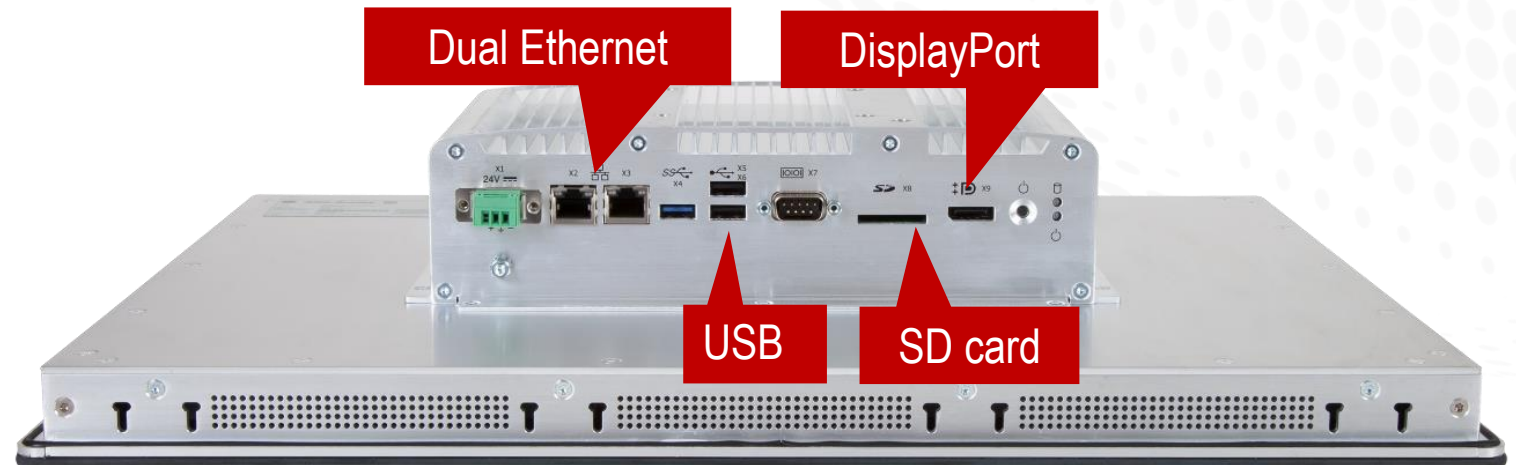


Available I/O Ports

VersaView 5400 Industrial Computers



- DisplayPort to VGA and DVI adaptors will be available
- All systems are 24V DC – an optional external AC/DC adaptor will be offered



VersaView® 5200 Single Display Box Thin Client

For ThinManager Applications



- Works exclusively with ThinManager® software for centralized management solutions
- Compact size with wall mount standard
- **Single DisplayPort Video output** (2560x1600 maximum resolution)
 - Ideal for Full HD displays
- Single network, 4x USB, and audio output for application flexibility
- Use with touch screens, keyboards, and mice
- **0–50 °C** operating temperature range - fanless
- AC/DC power adapter (100–240V) included
- DIN and VESA mount accessories available

VersaView® 5200 Dual Display Box Thin Client

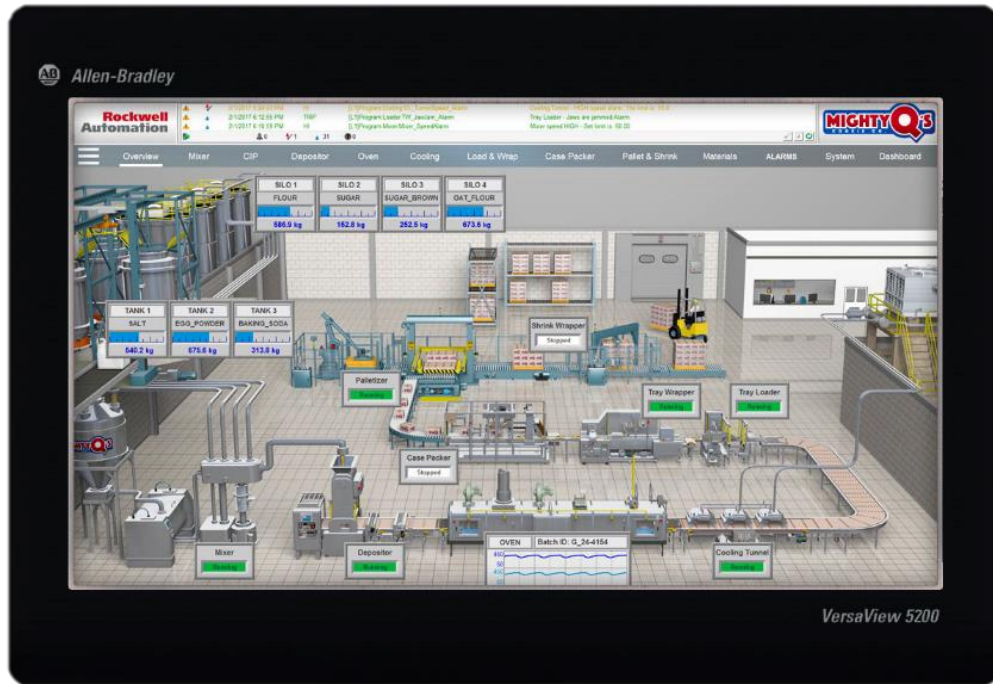
For ThinManager Applications



- Works exclusively with ThinManager® software for centralized management solutions
- For heavier industrial applications
- Built-in wall mount bracket
- **Dual video output** (2560x1600 max resolution)
 - DisplayPort + VGA ports for flexibility
- Dual network, 3x USB, RS-232 serial output for application flexibility
- Use with touch screens, keyboards, and mice
- **-20–60 °C** operating temperature range - fanless
- 12-24V DC Power
- DIN and VESA mount accessories available

VersaView® 5200 Integrated Display Thin Client

For ThinManager Applications



- Works exclusively with ThinManager® software for centralized management solutions
- All-in-one design with integrated touch screen
 - Edge-to-edge glass for easy cleaning
- 12.1 in – 21.5 in, 16:9 displays – Full HD native 1920x1080 resolution available
- IP65 sealed when panel mounted
- Single additional external display via DisplayPort
- Dual network, 3x USB, RS-232 serial output for application flexibility
- Use with external keyboards and mice
- 0–50 °C operating temperature range – **fanless, battery-free design**
- 24V DC Power

VersaView® 5200 Dual 4K Display Box Thin Client

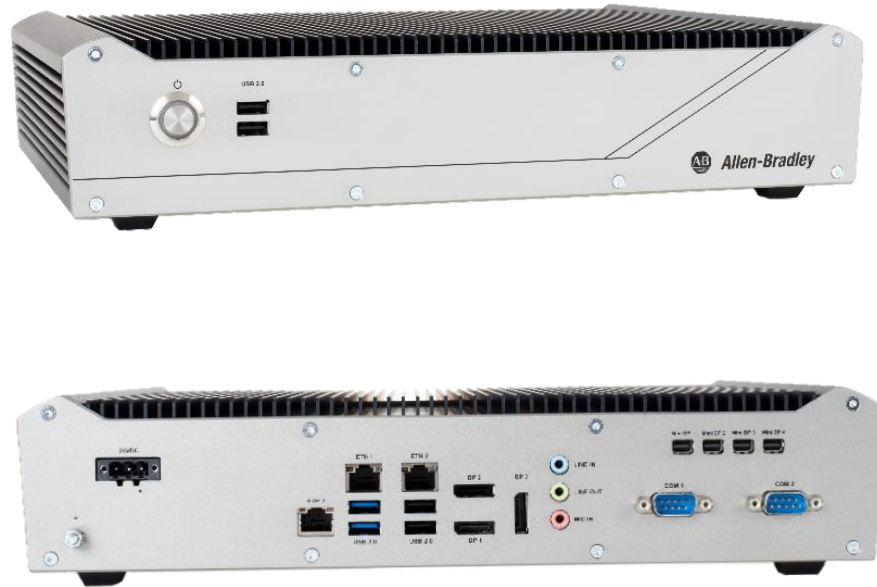
For ThinManager Applications



- Works exclusively with ThinManager® software for centralized management solutions
- Targeted for applications requiring 4K displays
- Built-in wall mount bracket
- Dual 4K video output (3840x2160 max resolution)
 - DisplayPort + HDMI ports for flexibility
- Dual network, 6x USB, RS-232 serial and audio output for application flexibility
- Use with touch screens, keyboards, and mice
- 0–55 °C operating temperature range - fanless
- 24V DC Power
- DIN and VESA mount accessories available

VersaView® 5200 Multi 4K Display Box Thin Client

For ThinManager Applications



- Works exclusively with ThinManager® software for centralized management solutions
- For applications requiring multiple 4K displays
- **Intel Core i5 Quad Core** CPU for demanding ThinManager content
- Table top mounting standard
- **3x or 7x 4K video outputs** available (3840x2160 maximum resolution)
- Triple network, 6x USB, dual RS-232 serial and audio input/output for application flexibility
- Use with touch screens, keyboards, and mice
- 0–45 °C operating temperature range - fanless
- 24V DC Power
- Wall mount accessory available

VersaView 5200 Industrial Thin Clients



	VersaView® 5200 Single Display Thin Client	VersaView® 5200 Dual Display Thin Client	VersaView® 5200 Integrated Display Thin Client	VersaView® 5200 Dual 4K Display Thin Client	VersaView® 5200 Multi 4K Display Thin Client
Target Availability	Available Today	Available Today	Available Today	Available Today	Available Today
Inputs/Outputs					
Video Output	1x DisplayPort	1x Digital + 1x VGA	Integrated Display + 1x DisplayPort	1x DisplayPort (4K) + 1x HDMI (4K)	3x DisplayPort (4K) or 3x Displayport (4K) + 4x Mini DisplayPort (4K)
USB Ports	2x USB 3.0 2x USB 2.0	1x USB 3.0 2x USB 2.0	1x USB 3.0 2x USB 2.0	2x USB 3.0 2x USB 2.0	2x USB 3.0 4x USB 2.0
LAN	1x	2x	2x	2x	3x
Audio	3.5 mm Out	Over DisplayPort	Over DisplayPort	3.5 mm Out	3.5 mm In & Out
COM/Serial	—	1x	1x	1x	2x
Hardware Design					
CPU	Intel Atom E3815 (Single Core)	Intel Atom E3815 (Single Core)	Intel Atom E3815 (Single Core)	Intel Atom E3950 x7 (Quad Core)	Intel i5-7500T (Quad Core)
Thermal Solution	Fanless	Fanless	Fanless	Fanless	Fanless
Power Supply	AC, External Brick	24V DC, Wide Range	24V DC, Wide Range	24V DC, Wide Range	24V DC, Wide Range
Indicators	Power Switch, Power LED	Power Switch, Power LED	Power Switch, Power LED	Power Switch, Power LED	Power Switch, Power LED
Environmental & Certifications					
Operating Temperature	0-50°C	-20-60°C	0-50°C	0-55°C	0-45°C
Certifications	cULus/CE, KC, EAC, RCM				

PanelView Plus 7

Product Line Expansion

PanelView Plus 7 Performance

Conformal Coated Terminals

- 9", 12" (available today)
- 7", 10", 15", 19" (December 2018)

Available May 2019

Stainless Steel IP69K rated terminals

- 9" and 12" Sizes
- **IP69K** rated terminals for extreme environments
- Ideal for Pharmaceutical environments
- NSF Certification for Food and Beverage applications
- Industry first for general purpose EOI terminals



ArmorView™ Plus 7 On-Machine™ Terminal

ArmorView Plus 7 On-Machine Terminal

Provides an efficient means to mount PanelView™ products on machine

Allows hardwired push buttons to also be mounted with the PanelView

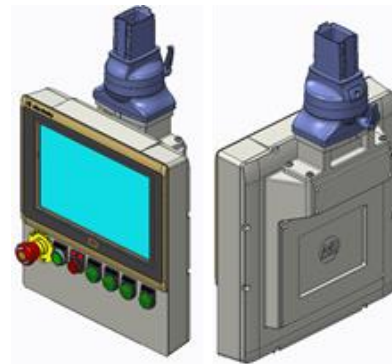
22mm Push Buttons are configured per customer requirements

Non-E Stop push buttons are wired to on-board I/O – 16 different standard button configurations

Hardwired E-Stop

Design will be re-purposed into PanelView™ 5000 family

12"W available first, followed by larger sizes



FactoryTalk View Machine Edition Software

New Features v11.0

Increased Display Count for PanelView Plus 7 Standard

FactoryTalk View ME v11.0



Overview

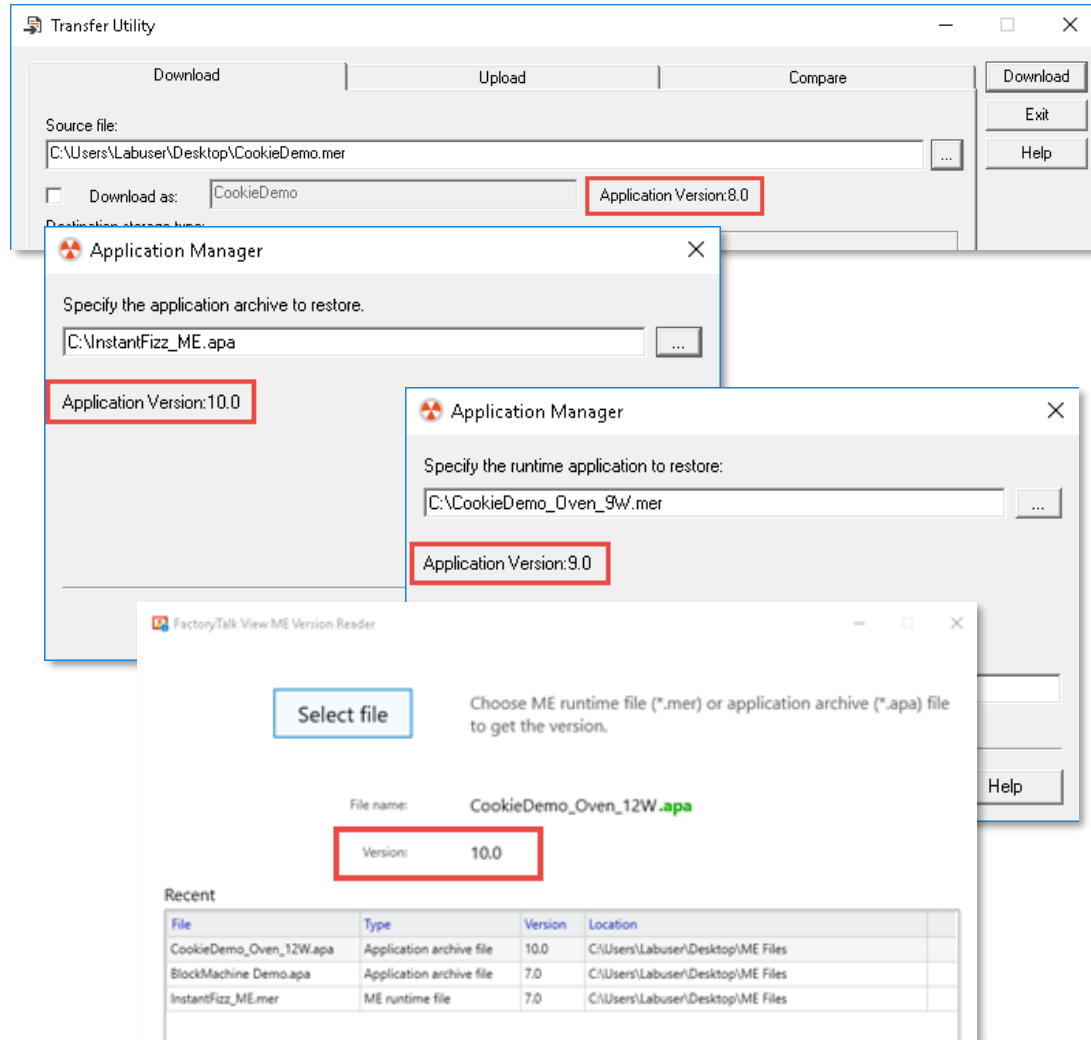
- Beginning with v11.0, PanelView Plus 7 Standard supports up to 100 total displays in an application
- PanelView Plus 7 V11.0 firmware required

Benefits

- Increased from 50 to 100 total display limit
- 50 on top displays, 50 replace displays per application
- Extends range of applications for PVP 7 Standard
- New option for applications requiring a 6" terminal - PanelView Plus 7 Standard can now replace 6" PanelView Plus 6 terminals

Runtime File and Application Backup Version ID

FactoryTalk View ME v11.0



Overview

- Enhancement to the Application Manager for FT View ME to show the version of an .MER or .APA file in the tool
- New version ID tool packaged as an external tool without FactoryTalk® View Studio dependencies can quickly check the version of .MER / .APA files

Benefits

- When trying to restore a FactoryTalk View ME runtime or APA archive file to a FactoryTalk View Studio project, users can see the version of the archive / runtime file before restoring the entire application
- Users can verify they have the proper version of FactoryTalk View Studio / PanelView Plus firmware to manage the runtime / archive project

Graphic Performance Improvement for PanelView Plus 7 Performance

FactoryTalk View ME v11.0



Overview

- Graphic rendering speed improvement for PanelView™ Plus 7 Performance HMI
 - Improved display load times – complex images such as gradient shading or PNG)
- PanelView Plus 7 Performance HMI only, does not impact PanelView Plus 7 Standard HMI
- Patch for FT View ME/PVP7 Performance v8.20-v10.0 available **now** in KB AID [1073963](#)
- May 2018 Patch Rollup must be installed before Sept 2018 patch

Benefits

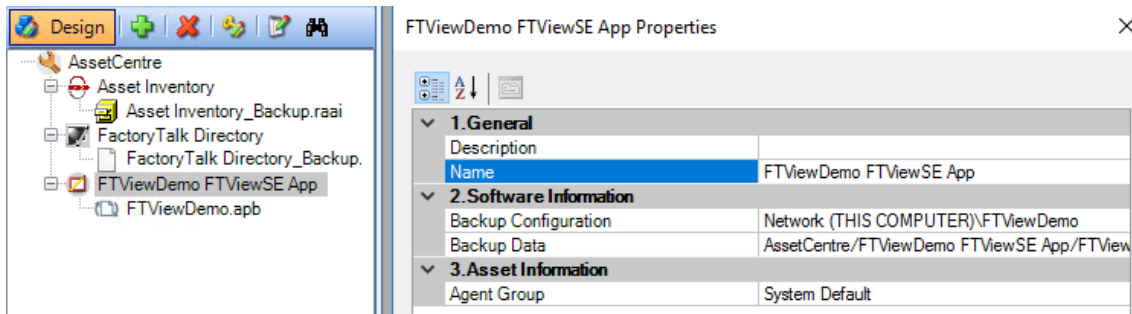
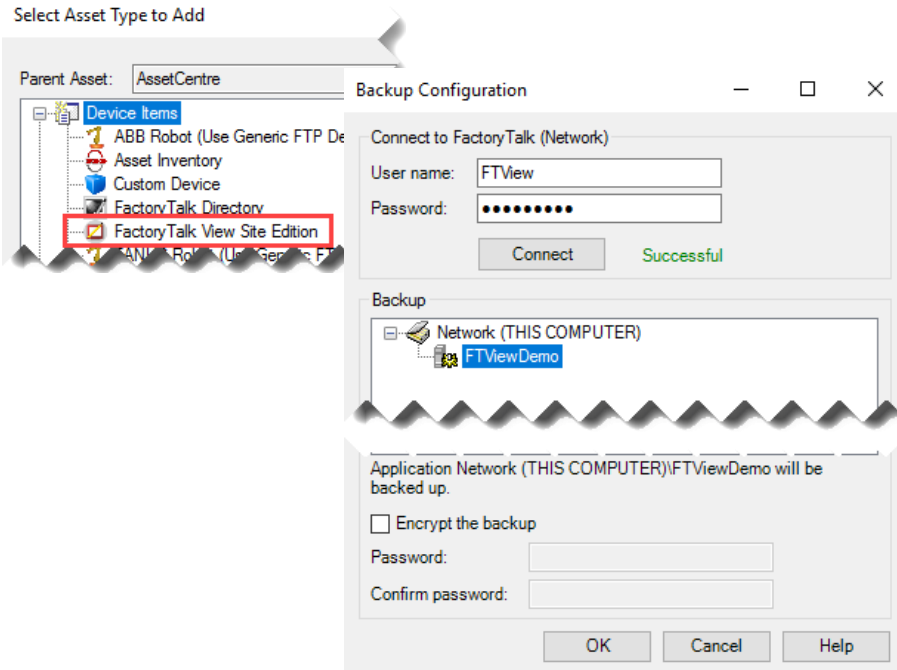
- Display call up time improved by between 10% – 20%

FactoryTalk View Site Edition Software

New Features v11.0

Archive Project Management & Disaster Recovery with FT AssetCentre

FactoryTalk View SE v11.0 & FactoryTalk AssetCentre v9.0



Overview

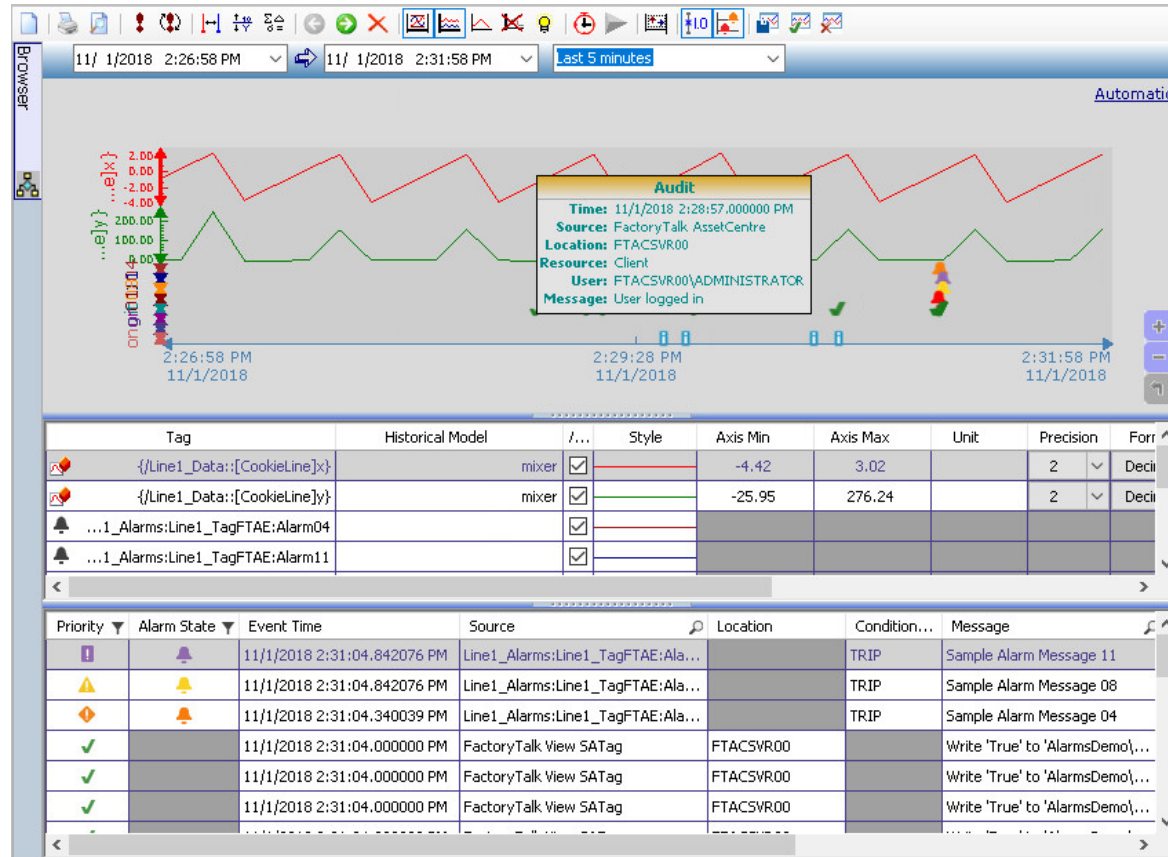
- New FT View Site Edition asset for FT AssetCentre
- Support for distributed and network station applications
- Leverages enhanced Application Manager for full backup
 - Included with FT AssetCentre Disaster Recovery for ROK
 - Compare report lists which graphic or any other project component changed between versions
- Version management of FT View SE applications
- Requires FT AssetCentre v9

Benefits

- Store and access multiple versions of application backups
- Compare FT View SE projects version to version
- Extract individual project components directly from archive

TrendPro Audit Log Integration

FactoryTalk View SE v11.0 & FactoryTalk AssetCentre v9.0



Overview

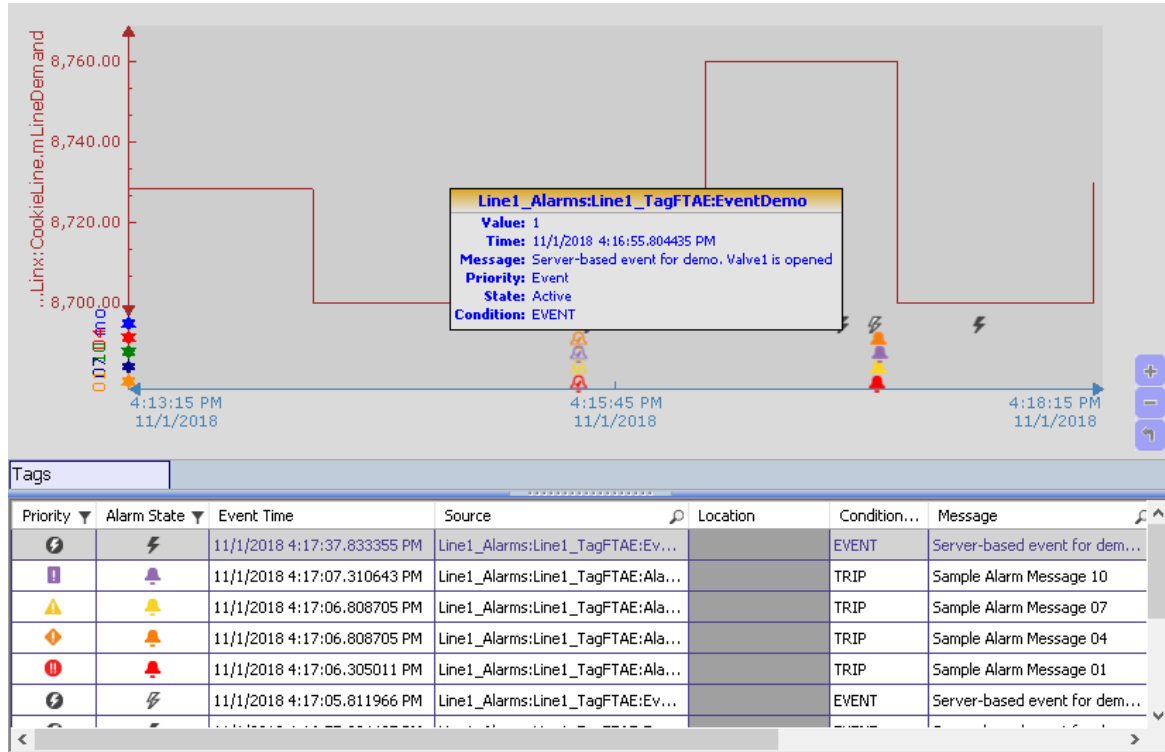
- TrendPro pulls FT AssetCentre log information through the FactoryTalk® interface; no additional software is required
- Supports operator actions from FT AssetCentre Audit log
- Events for system events (Info, Warning, and Error) also supported
- Filter and sort content displayed in the Event list
- Drag and drop items on TrendPro at runtime (without FT View Studio software)

Benefits

- Overlay operator audits, system diagnostics with control system data on the trend
- Tag can be selected to define the minimum and maximum values
- Show events that match certain criteria
- Runtime selection of data displayed with event list

TrendPro Enhancements

FactoryTalk View SE v11.0



Overview

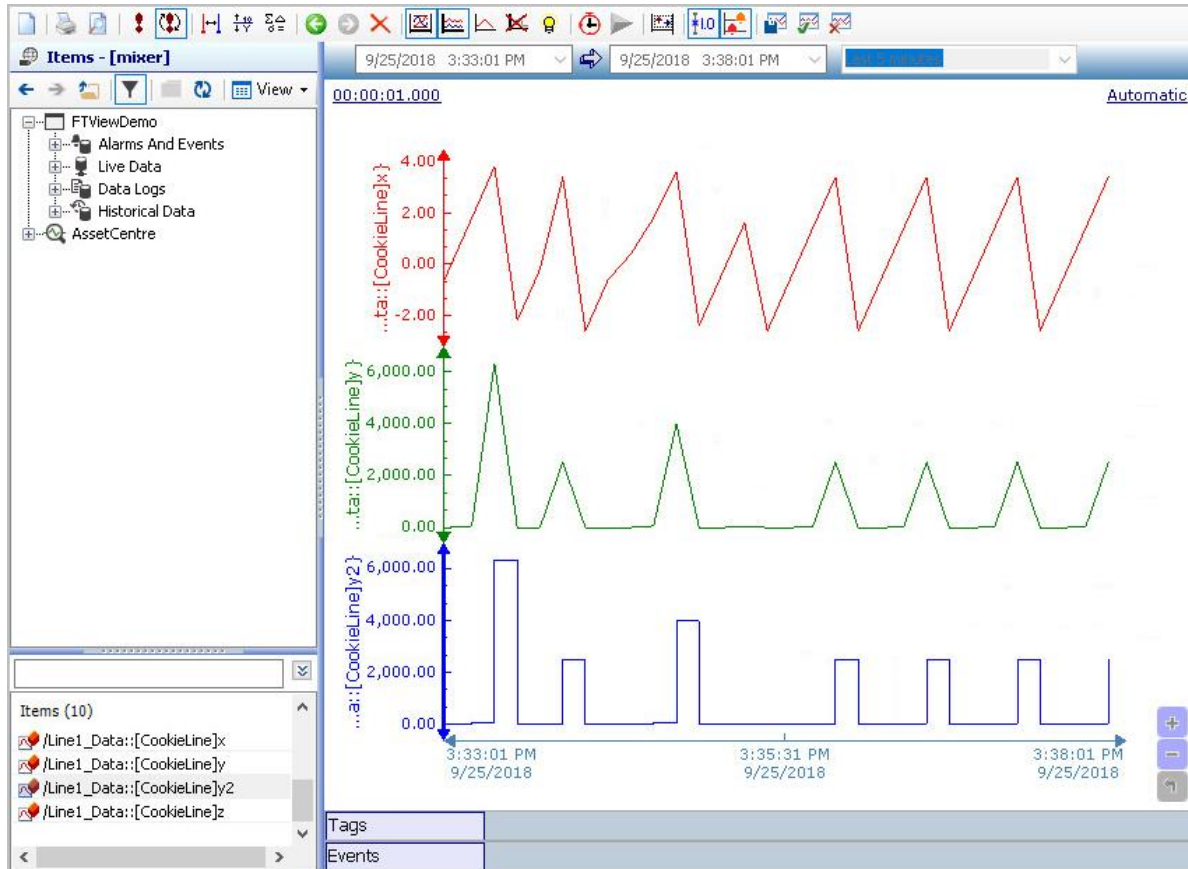
- Plot alarms on trend canvas (introduced in v10)
- Save TrendPro configuration and traces as centralized templates (introduced in v10)
- Filter time-series data directly on the trend at runtime
- Drag & Drop traces from multiple sources at runtime
- Plot time-series data along with related actions on trend
 - Runtime comments (FTA&E Remarks)
 - System events
 - Operator actions from FT AssetCentre
- Configure TrendPro look and feel to align with ISA-101 style

Benefits

- Associate data points on the trend with related actions and information to drive decisions visually
- Troubleshoot production anomalies quickly and visually, right in the HMI

OSI PI Data Source for TrendPro

FactoryTalk View SE v11.0



Overview

- Configure OSI PI server as a native data source in TrendPro
- Post-release patch to enable functionality in FactoryTalk View Site Edition v11.0
- No additional license required

Benefits

- Utilize existing Enterprise PI System data to trend in an FT View SE / PlantPax application

RecipePro+ Enhancements

FactoryTalk View SE v11.0

```
Message: Write '44' to 'RecipeProDemo\Ingredient03'.
Severity: Audit          Provider: FactoryTalk View SATag
Audience: Developer     User: DESKTOP-61TTPNM\TENGs
Time: 6/5/2018 5:19:52 AM Full Name: Bruce Teng
Location: DESKTOP-61TTPNM

- Additional Fields -
Verbosity: 0            zone:
area: Line1_HMI
```



```
Message: Write '44' to 'RecipeProDemo\Ingredient03'.
Severity: Information     Provider: FactoryTalk View SATag
Audience: Developer     User: DESKTOP-61TTPNM\TENGs
Time: 6/5/2018 5:19:52 AM Full Name: Bruce Teng
Location: DESKTOP-61TTPNM

- Additional Fields -
Verbosity: 0            zone:
area: Line1_HMI
```



```
Message: RecipePro+ download recipe file 'Recipe01' started.
Severity: Information     Provider: FactoryTalk View Recipe Server
Audience: Operator       User: DESKTOP-61TTPNM\TENGs
Time: 6/5/2018 5:19:50 AM Full Name: Bruce Teng
Location: DESKTOP-61TTPNM

- Additional Fields -
Verbosity: 0            zone:
area: RNA://SGlobal/FTViewDemo/Line1_HMI
```

Overview

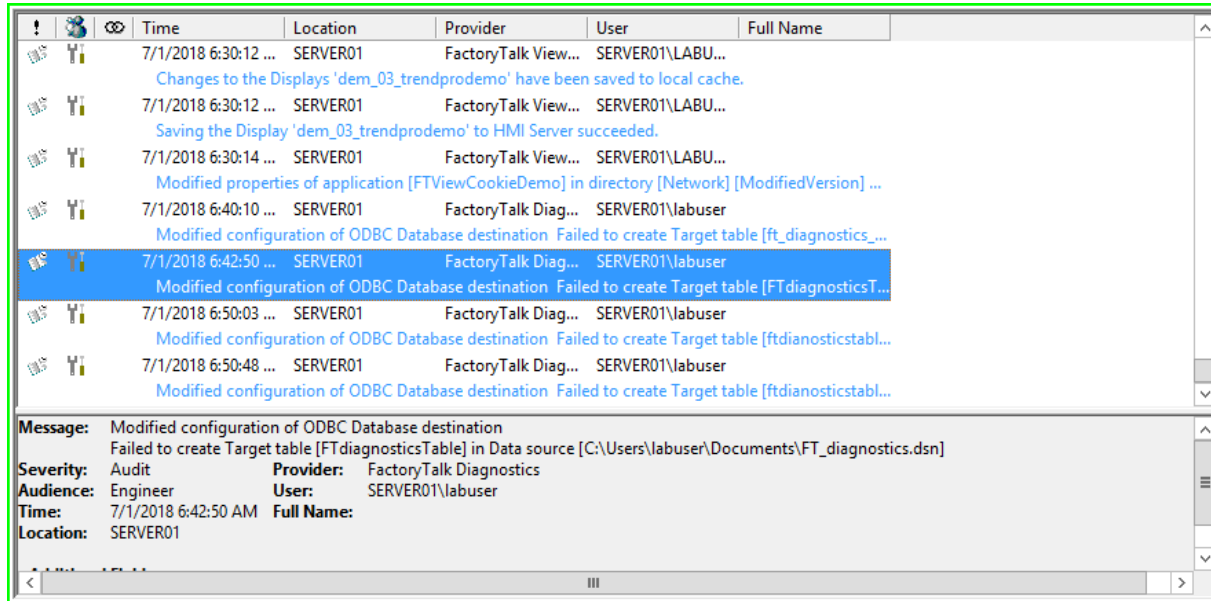
- Populate current (selected) recipe from a system value
- Built-in partial download detection on a recipe deployment
- Audit message optimization for recipe operations
- Also applies to FT View ME Recipes

Benefits

- RecipePro+ can provide operators with the currently executing recipe without requiring that value to be stored as a tag
- Partial download detection gives users assurance that a recipe will not be half deployed due to a failed communication event
- Reduced clutter in Audit log: single Information-type message now logged when RecipePro+ download is initiated

FactoryTalk Diagnostics Viewer Control

FactoryTalk View SE v11.0



	Time	Location	Provider	User	Full Name
Y	7/1/2018 6:30:12 ...	SERVER01	FactoryTalk View...	SERVER01\LABU...	Changes to the Displays 'dem_03_trendprodemo' have been saved to local cache.
Y	7/1/2018 6:30:12 ...	SERVER01	FactoryTalk View...	SERVER01\LABU...	Saving the Display 'dem_03_trendprodemo' to HMI Server succeeded.
Y	7/1/2018 6:30:14 ...	SERVER01	FactoryTalk View...	SERVER01\LABU...	Modified properties of application [FTViewCookieDemo] in directory [Network] [ModifiedVersion] ...
Y	7/1/2018 6:40:10 ...	SERVER01	FactoryTalk Diag...	SERVER01\labuser	Modified configuration of ODBC Database destination Failed to create Target table [ft_diagnostics_...
Y	7/1/2018 6:42:50 ...	SERVER01	FactoryTalk Diag...	SERVER01\labuser	Modified configuration of ODBC Database destination Failed to create Target table [FTdiagnosticsT...
Y	7/1/2018 6:50:03 ...	SERVER01	FactoryTalk Diag...	SERVER01\labuser	Modified configuration of ODBC Database destination Failed to create Target table [ftdianosticstabl...
Y	7/1/2018 6:50:48 ...	SERVER01	FactoryTalk Diag...	SERVER01\labuser	Modified configuration of ODBC Database destination Failed to create Target table [ftdianosticstabl...

Message: Modified configuration of ODBC Database destination
Failed to create Target table [FTdiagnosticsTable] in Data source [C:\Users\labuser\Documents\FT_diagnostics.dsn]
Severity: Audit **Provider:** FactoryTalk Diagnostics
Audience: Engineer **User:** SERVER01\labuser
Time: 7/1/2018 6:42:50 AM **Full Name:**
Location: SERVER01

Overview

- New native control to view FactoryTalk® Diagnostics on HMI displays
- Define one default filter at design time to show diagnostics match a certain criteria
- Specify 'ad-hoc' message filter at runtime

Benefits

- Show FactoryTalk Diagnostics on displays – no need to launch the separate FactoryTalk Diagnostics Viewer

Enhanced E-Signature Options

FactoryTalk View SE v11.0

The screenshot displays three overlapping windows from the FactoryTalk View SE v11.0 software:

- Button Properties**: A window with tabs for General, Action, Up Appearance, Down Appearance, Disabled Appearance, and Common. The Action tab is selected, showing an "Action:" dropdown set to "Run command" and a "Press action:" text area. Below, there are fields for "Repeat action:", "Repeat rate (secs):" (set to 0.25), and "Release action:" (set to "&Set MyTag 1"). At the bottom, under "Confirmation and E-Signature settings", the "Require E-Signature" radio button is selected and highlighted in yellow, with a "Configure" button next to it.
- Electronic Signature Configuration**: A modal dialog box with a "General" tab. It contains checkboxes for "Allow blank comment", "Require re-authentication", and "Require counter signature". Below these is a dropdown for "Authorized Group" set to "Windows Administrators". It has "Help", "OK", and "Cancel" buttons.
- FactoryTalk View Electronic Signature**: A larger dialog box for the signature process. It includes a "Password:" field with masked characters. Below is a "Comments:" text area containing the text "change setpoint of tank1 temp to 100". At the bottom, there is a "Counter Signatory" section with "User Name:" (set to "Supervisor") and "Password:" (masked) fields, another "Comments:" text area containing "Approved", and "Accept", "Reject", and "Cancel" buttons.

Overview

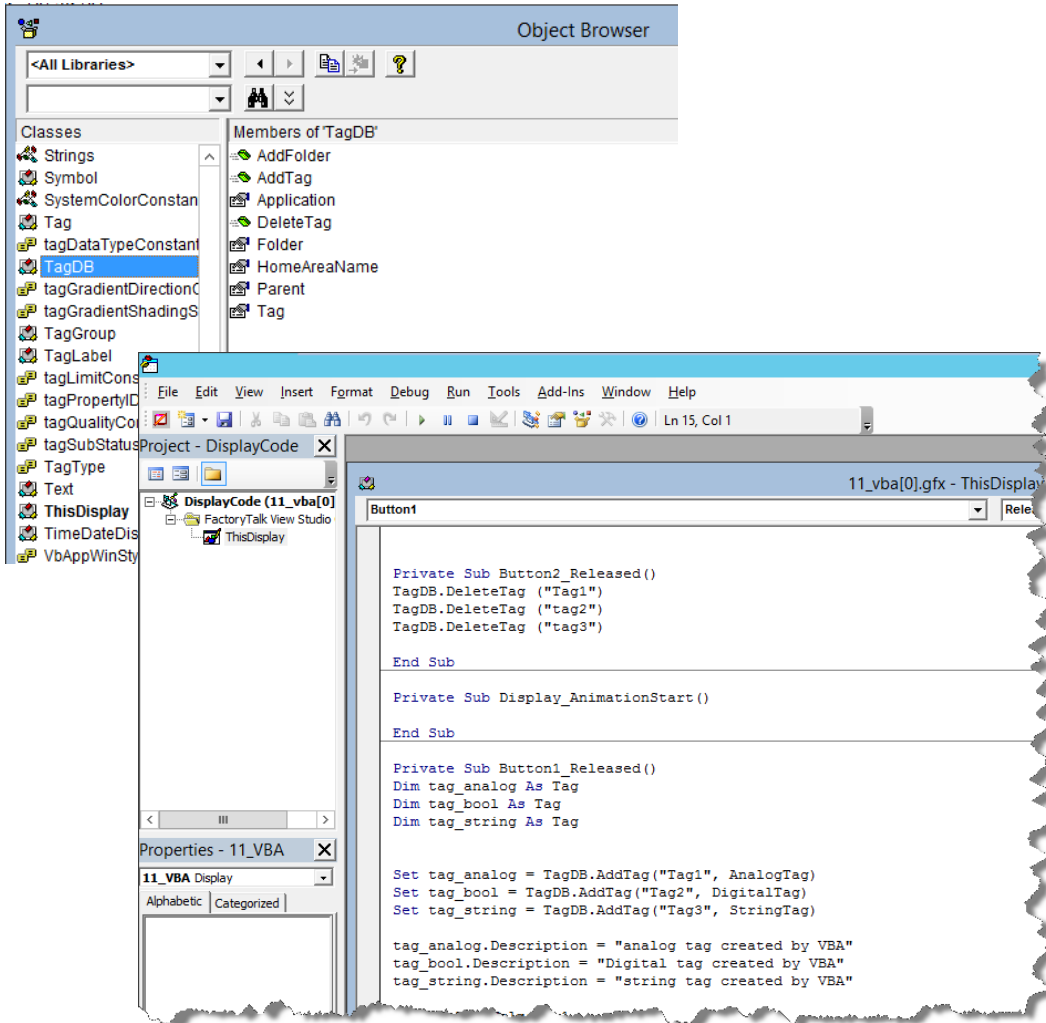
- Enhanced native E-Signature functionality (for 21 CFR Part 11) on FT View SE input controls
 - Command button
 - Numeric input
 - String input
- Supports single & counter signatures

Benefits

- Use instead of, or in conjunction with, E-Signature ActiveX control
- Built-in to common objects used on displays

VBA Interface for HMI TagDB

FactoryTalk View SE v11.0



Overview

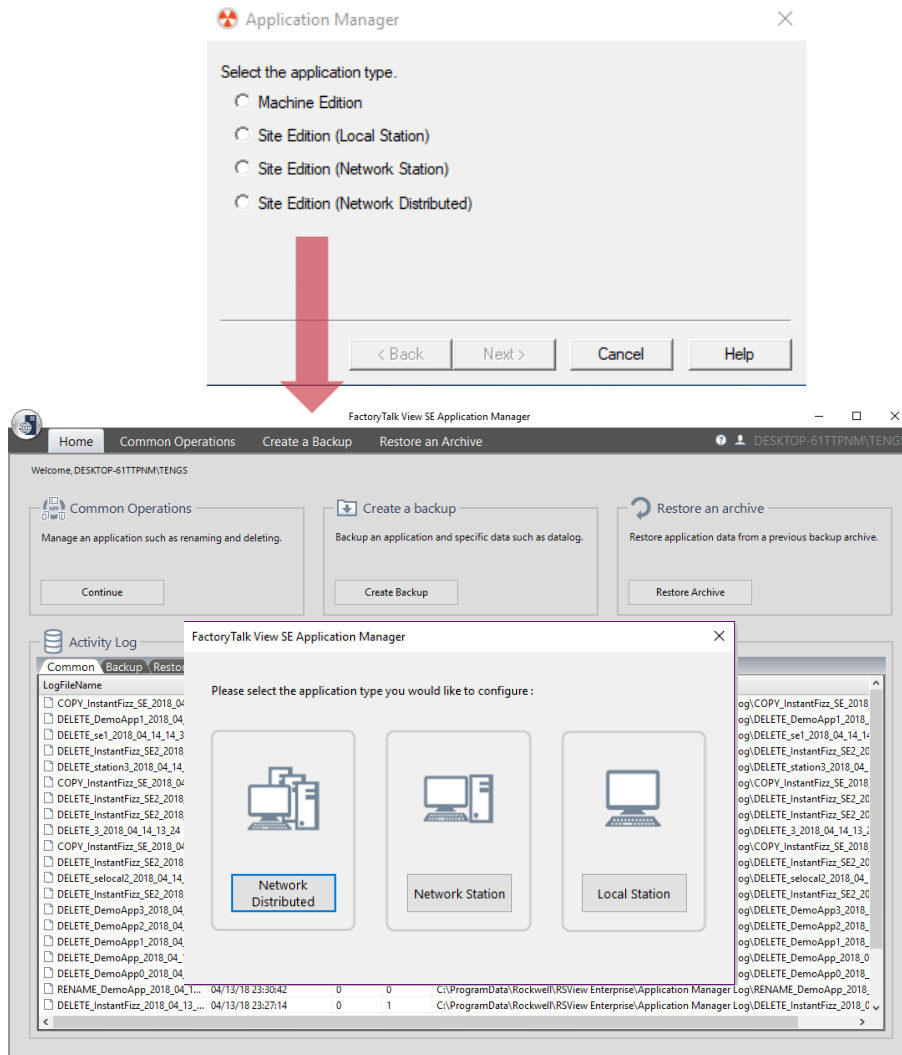
- TagDB module in VBA similar to RSView32 project VBA
- Create/Edit/Delete tags through VBA scripts
- Read/Write tag values through VBA scripts

Benefits

- Access HMI TagDB through VBA code
- Reuse more RSView32 project level VBA code when migrating RSView32 project to SE
- Runs in display code, but allows RSView32 project code for the TagDB to be converted

Enhanced FT View SE Application Manager

FactoryTalk View SE v11.0



Overview

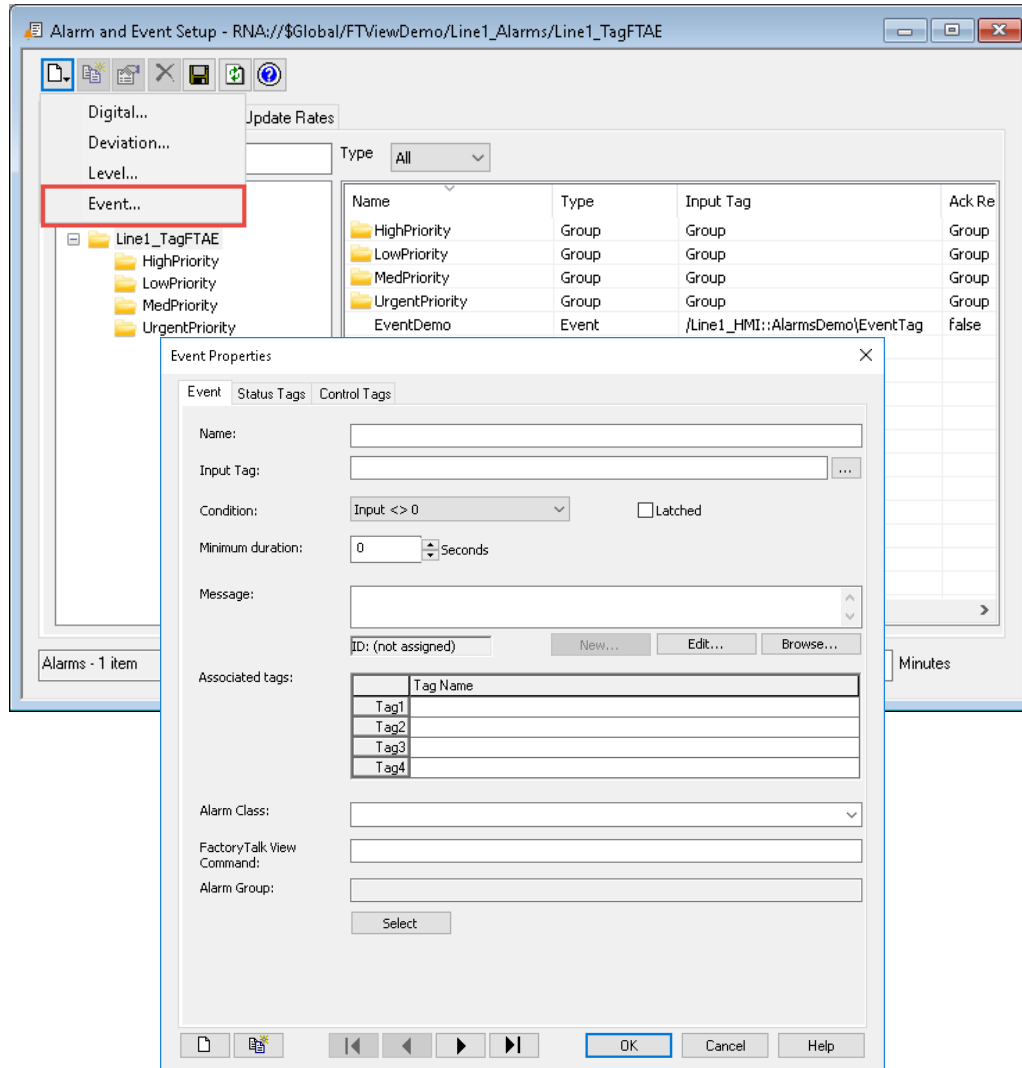
- Manage all SE application types with a single tool
- Backup and restore functions for network & local station apps in addition to network distributed apps
- Delete, rename, copy (only supported by local station) applications
- Improved performance to perform application management functions without rebooting systems

Benefits

- A single tool to manage SE applications
- Perform renames and deletes without needing to reboot systems
- Enables FTAC to leverage same interfaces to automatically back up network station applications

FactoryTalk Event for Server-based Alarms & Events

FactoryTalk View SE v11.0



Overview

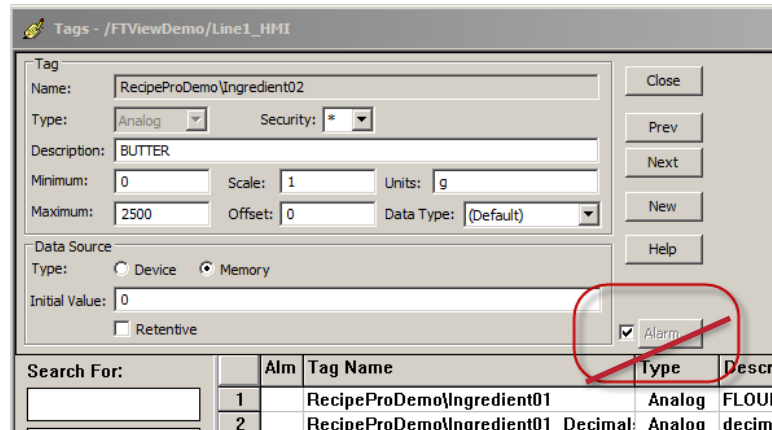
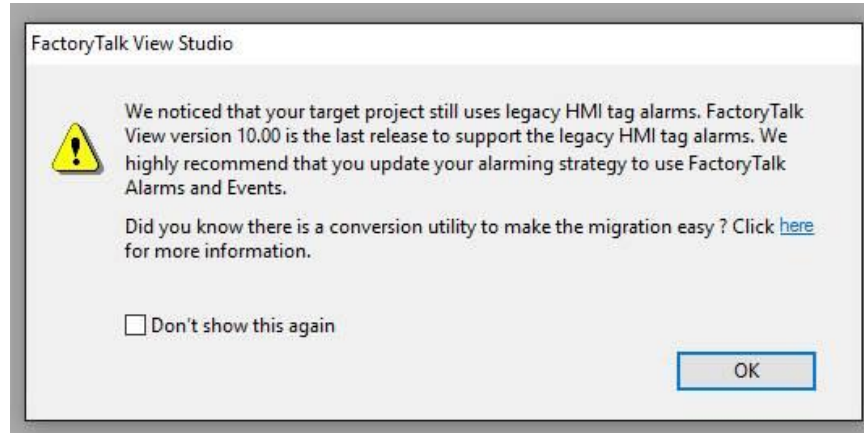
- Event type added to the list of Alarm & Event types
- Digital condition (= 0 | <> 0) tag
- Supports 4 additional associated tags for sampling
- Event states are Active, InActive, Suppressed, Disabled
- When Active, Events are shown on the alarm summary; clear when state changes to InActive
- Supports historization as new class of message (Event) in FTAE history database
- Event Severity = 0 to differentiate from alarms

Benefits

- Capture production events in the HMI natively as part of the alarming solution
- Separate events from alarms for operators
- Leverage the same tools and reporting tools for alarms & events

Standardizing on FactoryTalk Alarms and Events

FactoryTalk View SE v11.0



Overview

- Remove the entry to create new legacy HMI alarms
- Remove items from Studio to configure legacy HMI alarms
- Keep the legacy alarm definitions in the existing HMI project
- Hide the legacy HMI alarm functions from expression editor
- Hide the legacy HMI commands from the Command wizard
- Prevent from executing legacy alarm commands at runtime
- Users of an older project using HMI tag alarming are prompted with the suggestion to migrate alarming during upgrade to v10.00

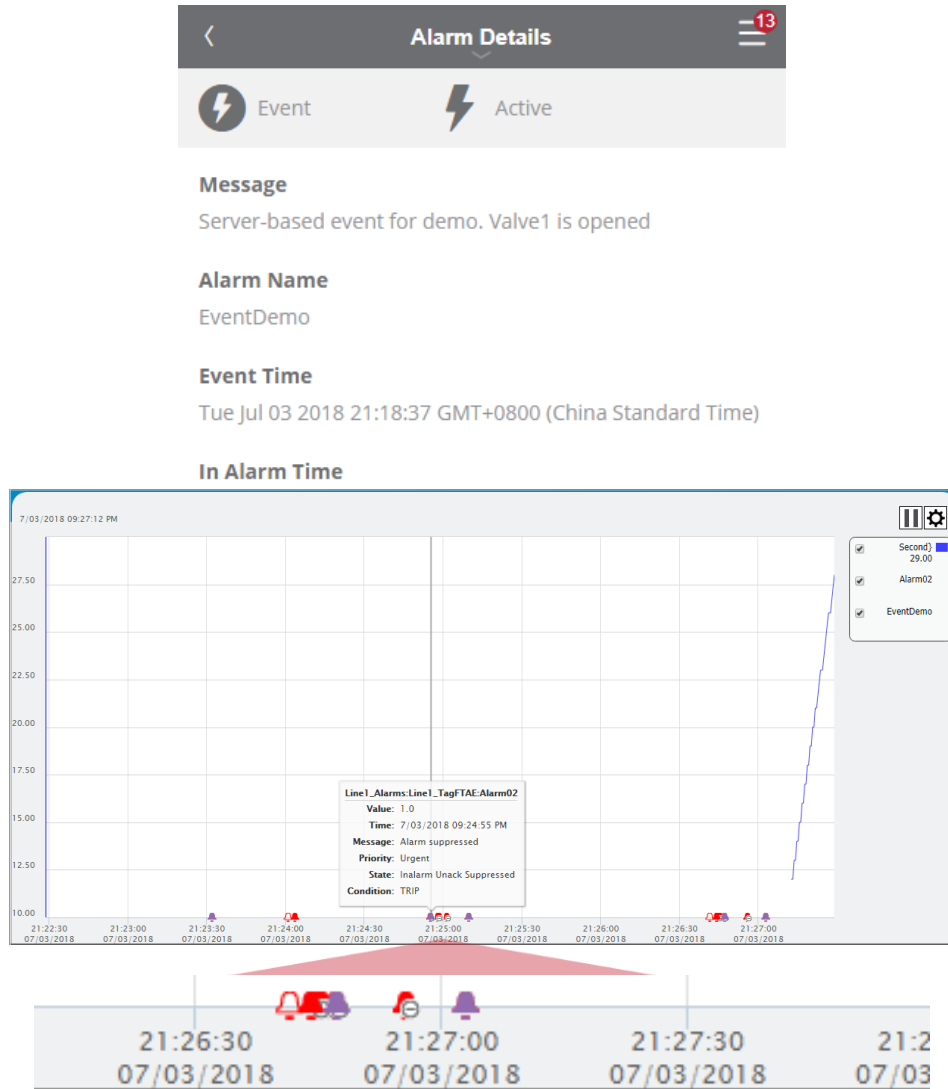
Benefits

- FactoryTalk Alarms and Events will continue to be supported and enhanced
- FactoryTalk Alarms and Events provides more granular control, better UI components, integrated history
- The automatic migration tool is installed with FactoryTalk® View SE v11. Prior to v10, this tool was available in KB [AID 45583](#)

FactoryTalk View v10.0 was the last release to support legacy HMI tag alarming

FT View Point – Mobile Trend with Alarm Events

FactoryTalk View SE v11.0



Overview

- Support server-based event on FactoryTalk® ViewPoint mobile alarm summary
- Will automatically query alarm history and display alarm events on trend

Benefits

- Mobile access to server-based event
- Allow mobile device users to view alarms on the trend

FT ViewPoint – Mobile FTAE Commands and Remark

FactoryTalk View SE v11.0

The screenshot displays the 'Filter' section of the FT ViewPoint mobile application. It features a 'Conditions filter' tab and several filtering options:

- Priority:** A toggle switch is set to 'On'. Below it, four priority levels are listed with corresponding icons and checkmarks: Urgent (red exclamation mark), High (orange exclamation mark), Medium (yellow exclamation mark), and Low (purple exclamation mark).
- In Alarm:** A toggle switch is set to 'On'. Below it, two buttons are shown: 'In Alarm' (highlighted in grey) and 'Normal'.
- Acknowledge:** A toggle switch is set to 'On'. Below it, two buttons are shown: 'Acknowledged' (highlighted in grey) and 'Unacknowledged'.
- Shelve:** A toggle switch is set to 'Off'. Below it, two buttons are shown: 'Shelved' and 'Unshelved'.
- Suppress:** A toggle switch is set to 'Off'.

At the bottom of the screen, there are two navigation icons: a checkmark and a circle with a diagonal line.

Overview

- Support AE_Remark command
- Support FTAE Commands
- New alarm filtering capabilities for mobile alarm history

Benefits

- Allows mobile device users to capture operator comments when an alarm is resolved
- Easy to specify which alarms to displayed in the mobile alarm history by filtering condition

Demo Application: FactoryTalk View SE Distributed

FactoryTalk View SE v11.0

Walks a user through features delivered in v9.0-v11.0

Setup instructions included via PDF in HMI server folder

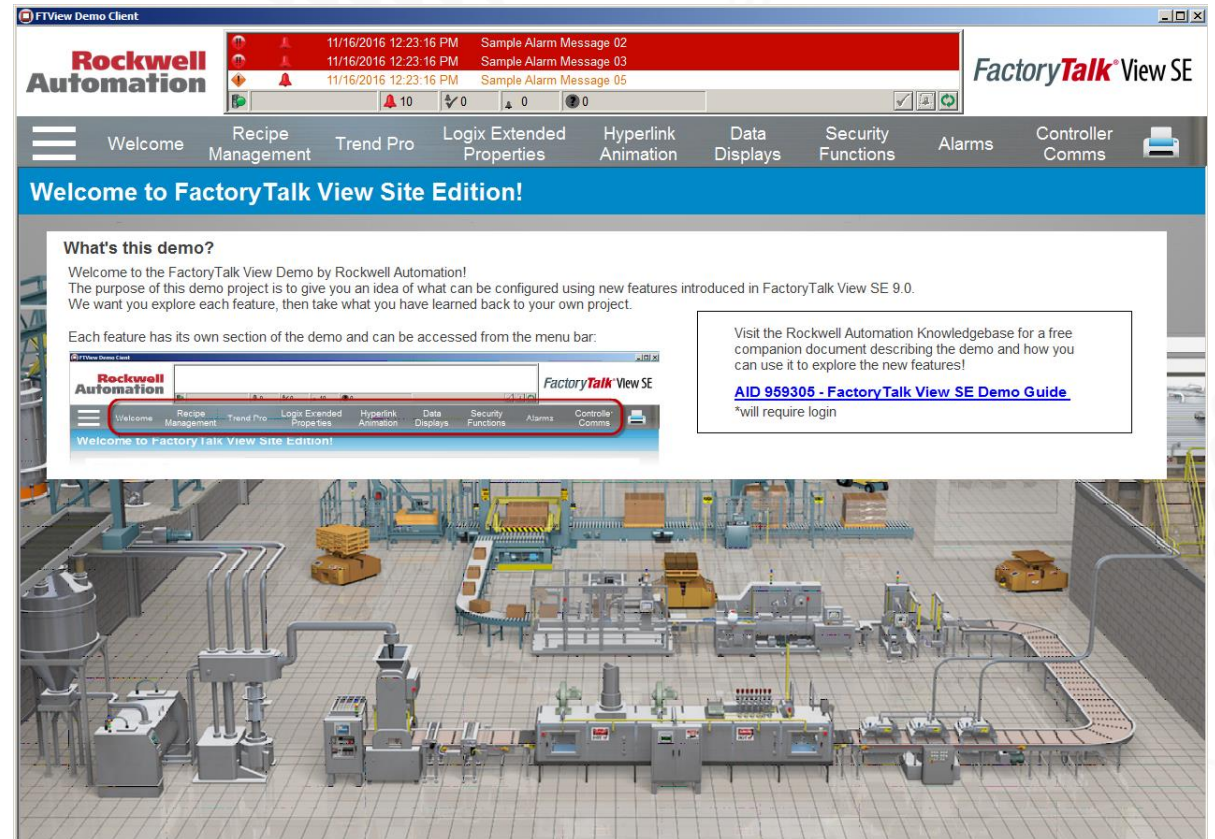
How to link controller

How to find .cli file

How to set up ViewPoint, etc.

Installed with FactoryTalk View SE v11.0

Demo set up guide in KB AID [959305](#)





**Rockwell
Automation**

Innovation & Technology Forum

Thank you



Contact me via LinkedIn! – **Tomas Knobloch**